

UNITED STATES PUBLIC LAND SURVEY CORNER CERTIFICATE FOR

Land survey monuments situated in Section 3, Township 108 North, Range 39 West, of the Fifth Principal

Meridian, Murray County, Minnesota..

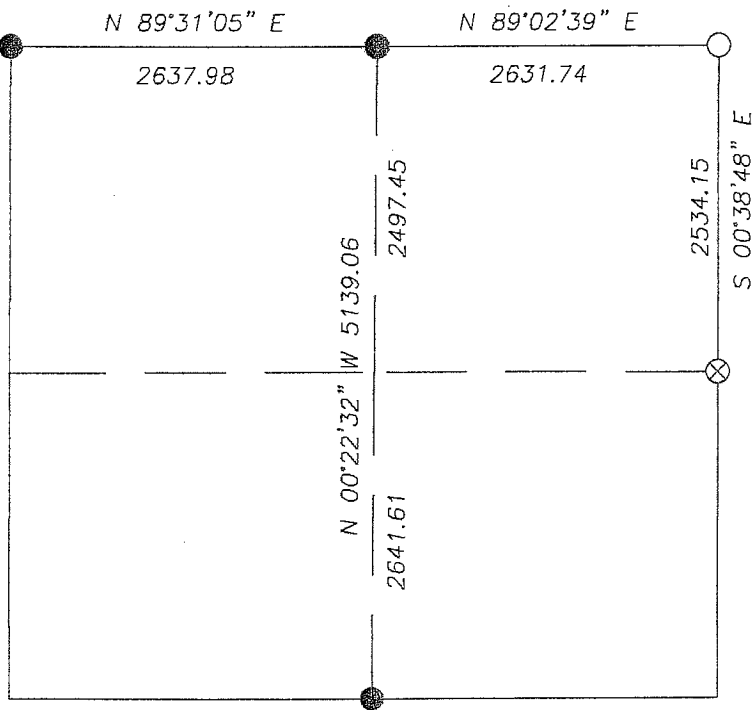
Previously recorded in N/A in County Recorder's Office.

(Show reason for preparing this certificate, the evidence and detailed procedure used in establishing the corner position & monumentation found or placed.)
 MONUMENT DESCRIPTION AND REMARKS: On December 5, 2012 we dug with backhoe for NE Corner & found a 10" X 10" stone 3.4' below surface at centerline of Township Road in line with fence South. I accepted stone as original corner. County Highway records show no information for corner. Also County Highway records show no information for East 1/4 Corner. I accepted the existing wood fence corner post with fences running north, south, east & west. This fits practical location.

MURRAY COUNTY COORDINATES NAD-83 (2007) PLAN-VIEW

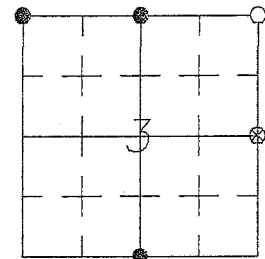
N = 226792.47
E = 566495.91

N = 266770.28
E = 563858.03

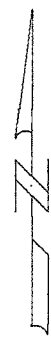


N = 226836.37
E = 569127.29

N = 224302.39
E = 569155.89



TWP. 108 N, RG. 39 W.



N = 221653.52
E = 566529.61



I hereby certify that this land surveying document was prepared and related survey work was performed by me or under my direct supervision and that I am a duly licensed Land Surveyor under the laws of the State of Minnesota.

Perry L. Zieske 1-24-13
 Signature Date
 Perry Zieske
 License number 23008

Corners to be Indexed

Corners	Section	Township	Range
NE	3	108	39
E 1/4	3	108	39